

Borough Council of
**King's Lynn &
West Norfolk**



Bio Diversity Task Group

Agenda

Tuesday, 14th May, 2024
at 4.00 pm

in the

**Council Chamber
Town Hall
Saturday Market Place
King's Lynn**

Remote Meeting on Zoom and available for the public to view on
[WestNorfolkBC on You Tube](#)



King's Court, Chapel Street, King's Lynn, Norfolk, PE30 1EX
Telephone: 01553 616200

2 May 2024

Dear Member

Bio Diversity Task Group

You are invited to attend a meeting of the above-mentioned Task Group which will be held on **Tuesday, 14th May, 2024 at 4.00 pm** in the **Council Chamber, Town Hall, Saturday Market Place, King's Lynn PE30 5DQ** to discuss the business shown below.

Yours sincerely

Chief Executive

AGENDA

1. **Minutes from the previous meeting** (Pages 4 - 7)
2. **Apologies for absence**
3. **Members present under standing order 34**
4. **Declarations of Interest** (Page 8)
5. **Items of urgent business**
6. **Existing biodiversity activities carried out, and projects funded by the BCKLWN.** (Pages 9 - 21)
7. **Options on Borough Council land and buildings going forward (report to follow)**

To:

Bio Diversity Task Group: M Bartrum, A Bullen, S Dark, M de Whalley and P Kunes

Officers

Stuart Ashworth, Assistant Director, Environment and Planning
Martin Chisholm, Assistant Director, Operations and Commercial
Chris Durham, Operations Manager
Geoff Hall, Executive Director, Development and Environment
Matthew Henry, Assistant Director, Property and Projects
Claire Thompsett, Operations Manager

BOROUGH COUNCIL OF KING'S LYNN & WEST NORFOLK

BIO DIVERSITY TASK GROUP

Minutes from the Meeting of the Bio Diversity Task Group held on Monday, 15th April, 2024 at 4.00 pm in the Council Chamber, Town Hall, Saturday Market Place, King's Lynn PE30 5DQ

PRESENT: Councillor M de Whalley (Chair)
Councillors D Heneghan (sub for Cllr Bartrum), P Kunes
and T Parish (sub for Cllr Bullen)

Apologies for absence was received from Councillors M Bartrum and A Bullen

1 MINUTES FROM THE PREVIOUS MEETING

RESOLVED: The minutes from the previous meeting on 2 February 2024 were agreed as a correct record.

2 MEMBERS PRESENT UNDER STANDING ORDER 34

Councillor P Devulapalli attended on zoom under standing order 34.

3 DECLARATIONS OF INTEREST

None

4 ITEMS OF URGENT BUSINESS

None

5 BIODIVERSITY COMPETITION - COUNCILLOR DEVULAPALLI

Councillor Devulapalli gave a presentation of her draft proposals for the introduction of an annual biodiversity competition intended to promote and encourage greater awareness of biodiversity across the Borough. (a copy of the draft proposals are attached.)

Cllr Devulapalli intended that the competition would be community led relying on community volunteers. She asked that the Council support the introduction of an annual biodiversity competition by:

1. Publicly supporting and endorsing the proposal
2. Providing support and guidance to the group on how to run the competition through preparation of a project plan.
3. Provision of Comms support to highlight the importance of biodiversity and the competition.

The presentation set out a selection of 4 potential categories for the competition which would be subject to agreement – Under 14s, Container garden, small garden and large garden. She also suggested best nature friendly space in work place, schools, parish, and longest bee line.

It was also suggested that best town space should be included. This was supported. It was also suggested that the RSPB had criteria for different sized gardens etc for their birdwatch which could potentially be used. Each category would have potential criteria which could be ticked off for each entry.

G Hall Executive Director explained that if the Group supported the proposal a detailed proposal could be brought to Cabinet. The Group agreed with the proposal.

The logistics of the proposals were discussed and it was suggested that entries be sent in electronically or hard copies either to the Council offices, or to the libraries. with concern raised that there was limited capacity within the officer side to resource the proposal. It was suggested that potentially parish councils could get involved in their areas and forwarding what they felt were the strongest contenders, although it was stressed that a level of expertise in the subject was essential to also ensure the same criteria were being applied across the board as appropriate.

RESOLVED: That cabinet be invited to support a community driven Bio Diversity competition relying on community volunteers with the Council providing the following support:

1. Publicly supporting and endorsing the proposal
2. Providing support and guidance to the group on how to run the competition through preparation of a project plan.
3. Provision of Comms support to highlight the importance of biodiversity and the competition.

6

POLLINATOR ACTION PLANS - SPEAKER - HELEN BACZKOWSKA (NORFOLK WILDLIFE TRUST)

The Task Group welcomed Helen Baczkowska from the Norfolk Wildlife Trust who gave a presentation on the Trust's new Business Model for wildlife Caring for our nature reserves

- Advice to land managers from farms to communities
- Planning & advocacy
- Research, science & innovation

The presentation gave detail on the decline of pollinators in the country and how that could be improved by the reduction of pesticides, increased connectivity between green areas.

With regard to the Council's increase in b-connectivity sites it was acknowledged that often people complained when grass areas were not cut as often they wished, but it was suggested that the public be made aware that a reduction in cuts was to promote biodiversity in the area.

A discussion was held on the current position the Borough Council was in for biodiversity net gain which was in its early stages. Ms Baczkowska offered to assist where possible to the Open Spaces Team in their planning for increased biodiversity, and also was planning on running some workshops on the requirements for authorities and parishes, and the parishes could sign up to a mailing list on the subject.

Her timely offer of assistance was gratefully accepted and it was agreed that managing the wilding and informing people of it would help the public's understanding of the reasoning behind areas of uncut grass.

Councillor Parish commented that the council should decide what it wants to do and establish how to go about it. A discussion was also held on gardens which were destroyed and replaced with concrete or astroturf.

Further comments were made on walk-throughs carried out in areas before strimming was commenced.

RESOLVED That the presentation from the Norfolk Wildlife Trust be noted, and Ms Baczkowska's offer of assistance be gratefully accepted.

7

NOTE ON POLLINATOR ACTION PLANS - CLAIRE WIGGS

Claire Wiggs, Senior Ecologist presented a paper she had prepared on developing a Local Pollinator Strategy. It explained that a Local Pollinator Strategy or Plan should sit alongside other Local Biodiversity Action Plans, greenspace and green infrastructure strategies, and link into existing Local Development Plans or policies. It should outline a range of positive principles and associated actions which could be applied across the management of local authority projects, assets and decision-making processes. At its core, it should be about providing pollinator food and shelter across all types of land so that our pollinators will survive and thrive.

It was suggested that the Plan highlights examples of what was being done well and it be split into themes: threats, what the pollinators needed, connection and community engagement.

She had commented on a number of strategies which were currently in circulation and commended Cornwall's approach to a Plan.

A further discussion was held on biodiversity net gain (BNG) and the potential for banking land for BNG as some local providers had come forward. It was noted that a variety of habitats would be needed for such endeavours, and a site would receive a higher ranking the more local it was. It was noted that at this stage the council was concentrating on what it had to do legally to ensure it was compliant.

The question was raised as to whether there was a point to register large areas of planting of hedgerows etc, it was confirmed that from a BNG point it was not required, but potentially advisable from a tree and hedges point of view.

8 **OPPORTUNITIES FOR BIODIVERSITY - SPEAKER - GUEST
SPEAKER (NORFOLK WILDLIFE TRUST)**

This item was not considered as the guest speaker could not attend.

9 **DATE OF NEXT MEETINGS**

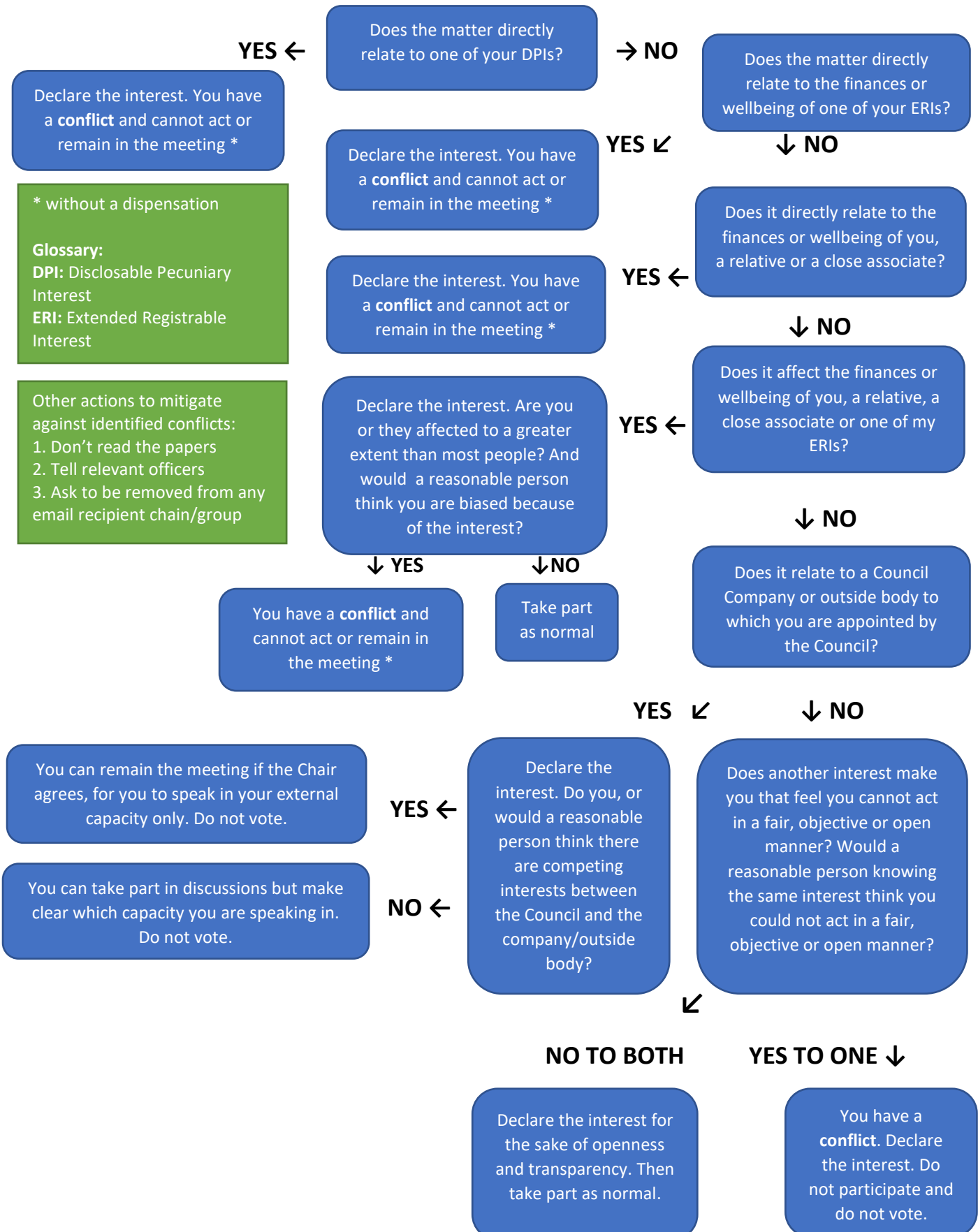
14 May and 25 June at 4.00pm

The meeting closed at 5.34 pm

DECLARING AN INTEREST AND MANAGING ANY CONFLICTS FLOWCHART



START



Declare the interest. You have a **conflict** and cannot act or remain in the meeting *

* without a dispensation

Glossary:

DPI: Disclosable Pecuniary Interest

ERI: Extended Registrable Interest

Other actions to mitigate against identified conflicts:

1. Don't read the papers
2. Tell relevant officers
3. Ask to be removed from any email recipient chain/group

YES ←

→ NO

YES ↙

↓ NO

YES ←

↓ NO

YES ←

↓ NO

↓ YES

↓ NO

YES ↙

↓ NO

YES ←

NO ←

↙

NO TO BOTH

YES TO ONE ↓

Biodiversity Areas Wildflowers

10

Public Open Space



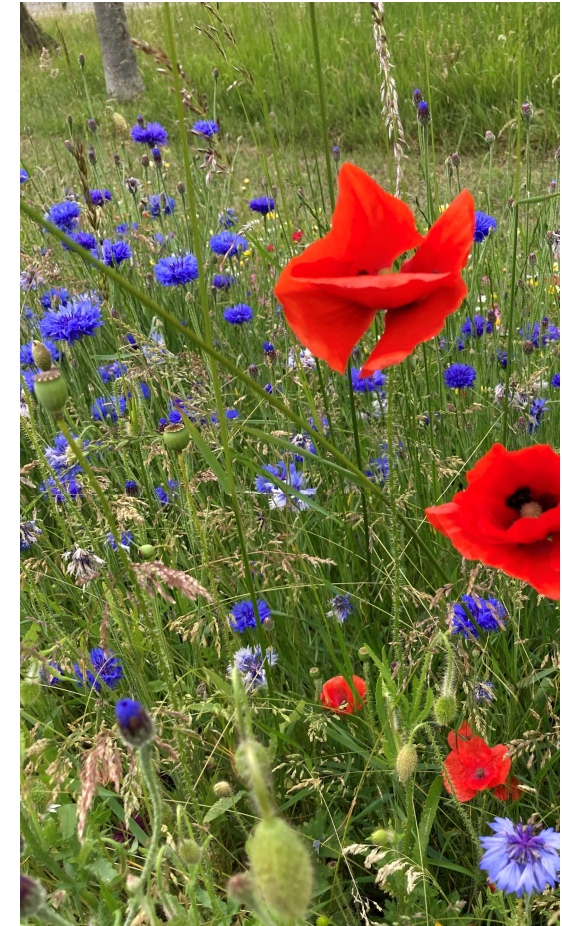
Wildflower Facts

- Types of wildflower areas
 - Annual
 - Perennial
 - Natural
- There is no simple strategy for creating wildflower meadows in urban environments.
 - Scattering seed on unprepared ground will not succeed
- To create a wildflower meadow from seed, you need to start with bare, weed-free ground.
 - Herbicide application – we prefer to avoid
 - Topsoil removal/excavation/rotovation
- The type of meadow created, and method used to create and manage them will vary with the ground conditions, type of habitat, available budget, labour resources and community/volunteer involvement.
- It is extremely important to remember that all grasslands and meadows require some form of management for them to be successful.

Planting Facts

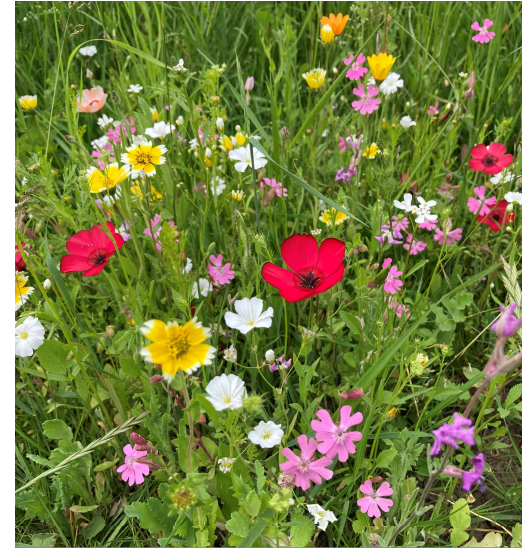
- 1kg of Annual Wildflower Seed
 - Range £100 - £200 depending on the mix (seasonal variability)
 - Coverage 1kg - Approx 300 - 350 sqm
 - Sowing Rate 3 – 4 g/m²
- Labour Costs
 - Volunteers can reduce the cost for maintaining small areas
 - More labour intensive than expected
- Plant and Machinery Costs
 - Tractor drawn equipment
 - Rotovate and Roll Machinery
 - Cut and Collect Machinery

12



Biodiversity Areas King's Lynn

- St Margarets Churchyard
 - Small section maintained by POS; seed provided by The Minster
- St Faiths Churchyard Gaywood
 - Small section maintained by church volunteers; seed provided by St Faiths
- Walks (BCKLWN)
 - Tennyson Bund – Planted with Daffodil Bulbs, cut once per year to encourage biodiversity
 - Behind Red Mount and St Johns Church, cut once per year to encourage biodiversity
 - Walks Island – GVCG Biodiversity Area
 - In Bloom Initiative – Greyfriars School wildflower seed planting/seed bombs
 - Involvement from the newly formed Friends of the Walks to partake in Biodiversity projects within the Park
- St Edmundsbury POS (BCKLWN)
 - POS Initiative for In Bloom Campaign
 - Annual wildflower strip
 - Swathes of long grass to encourage local biodiversity
- Edward Benefer Way (NCC)
 - Verge left longer, cut less frequently
- North Lynn Industrial Estate (BCKLWN)
 - POS Initiative and maintained by POS
 - Annual wildflower strip
- South Wootton (South Wootton in Bloom Committee)
 - The Common/St Marys Church/Wootton Park – Maintained by volunteers
- Lynnsport Meadow (BCKLWN)
 - Semi-improved grassland to be maintained as perennial wildflower meadow



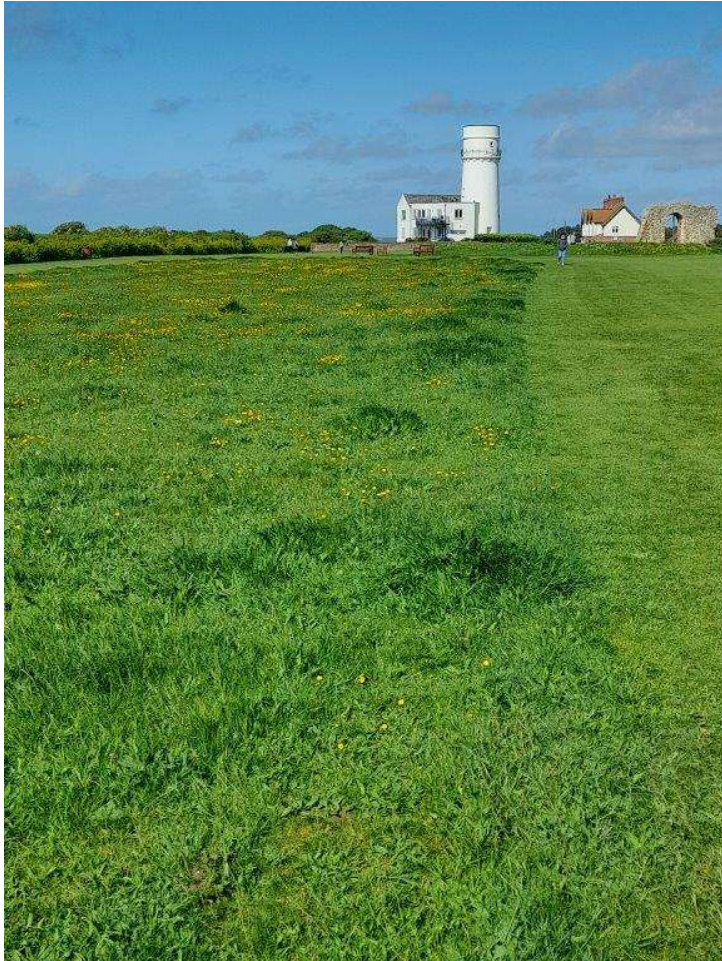


St Edmundsbury POS

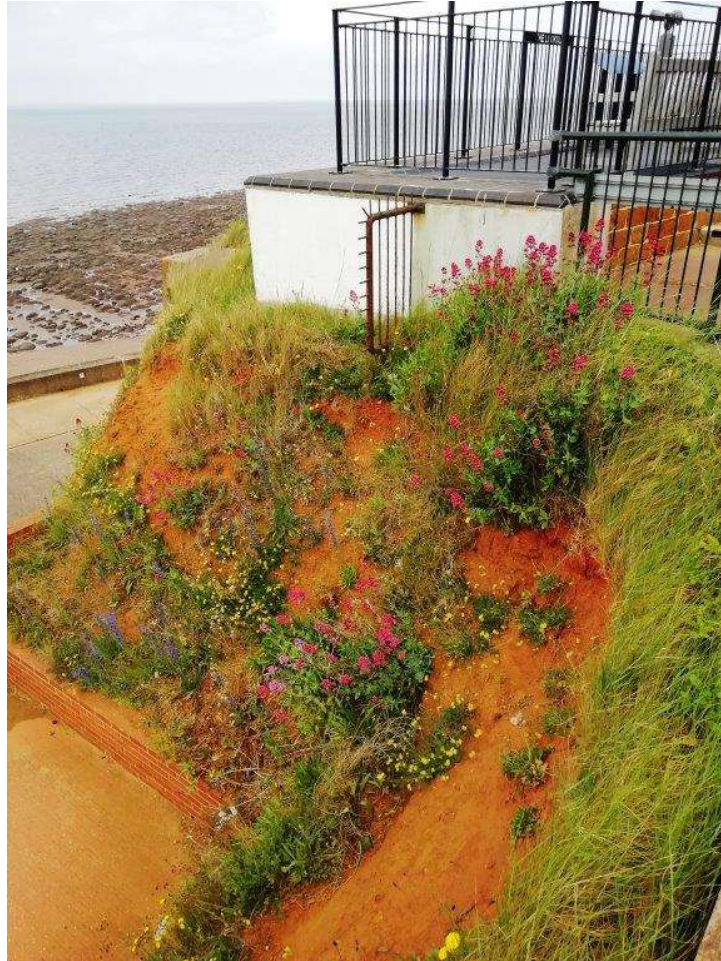
Biodiversity Areas Northern Area (Hunstanton)

- 11,580 m2 of wildflower landscape
 - Cliff Top (POS maintained)
 - Swathes of long grass to encourage local biodiversity – B line
 - Community Engagement through signage
 - Cliff Zig/Zag Path
 - Left to grow natural with minimal maintenance requirements
 - Boston Square (POS maintained)
 - Areas of long grass to encourage local biodiversity
 - Lighthouse (NCC cultivation licence required / POS maintained)
 - Annual wildflowers
 - Visual impact / Public attraction
 - Oasis Way (NCC cultivation licence)
 - Annual wildflowers
 - Visual impact / Public attraction
 - Supported by local businesses financially and through physical resource
 - A149 (NCC cultivation licence / POS maintained)
 - Annual wildflower
 - Visual impact / Public attraction
 - Grass banks left to grow long to encourage local biodiversity





Cliff Top – Grass Swathes



Zig/Zag Cliff Path – Native Species

Borough Council of
**King's Lynn &
West Norfolk**



These areas have been designated to encourage
Biodiversity and improve Ecology.

The grass will be cut and removed in the autumn period.

In leaving the grasses and plants to grow, both flower
and seed create important habitat
and food sources for insects and birds.



18



A149 Wildflowers

Biodiversity Areas

Southern Area (Downham Market)

- Memorial Field – Nature Volunteers Network (NVN) funded with limited input from POS for rotovating the area
- Howdale – Tree planting and wildflowers proposed for this year funded by NVN

19



Planning funded biodiversity projects

Background

- Borough's Habitat Regulations Assessment Monitoring and Mitigation Strategy – began in 2016 through the Local Plan
- Included collecting a tariff (originally £50 per dwelling) to go towards mitigating the effects of residential development on European protected sites
- Has funded a range of projects including physical works to visitor facilities, fencing and other infrastructure, and studies of impacts of visitors on sites such as Roydon Common (Up with the Larks)

20

Plovers in Peril programme

Record-breaking year for ringed plover chicks at Heacham and Snettisham

Conservationists in Norfolk are celebrating a fourfold increase of ringed plovers this year, thanks to efforts led "Funding for the project has come from the Borough Council of King's Lynn and West Norfolk via the habitats mitigation fund".

21



Planning funded biodiversity projects

- Moved over to Norfolk Recreational Impact Avoidance and Mitigation (RAMS) Programme. Currently around £217 per dwelling
- Joint strategy across all Norfolk authorities
- 22 • Based on Norfolk wide studies of recreational impacts on protected sites
- Will be used on specified projects on protected sites across Norfolk